

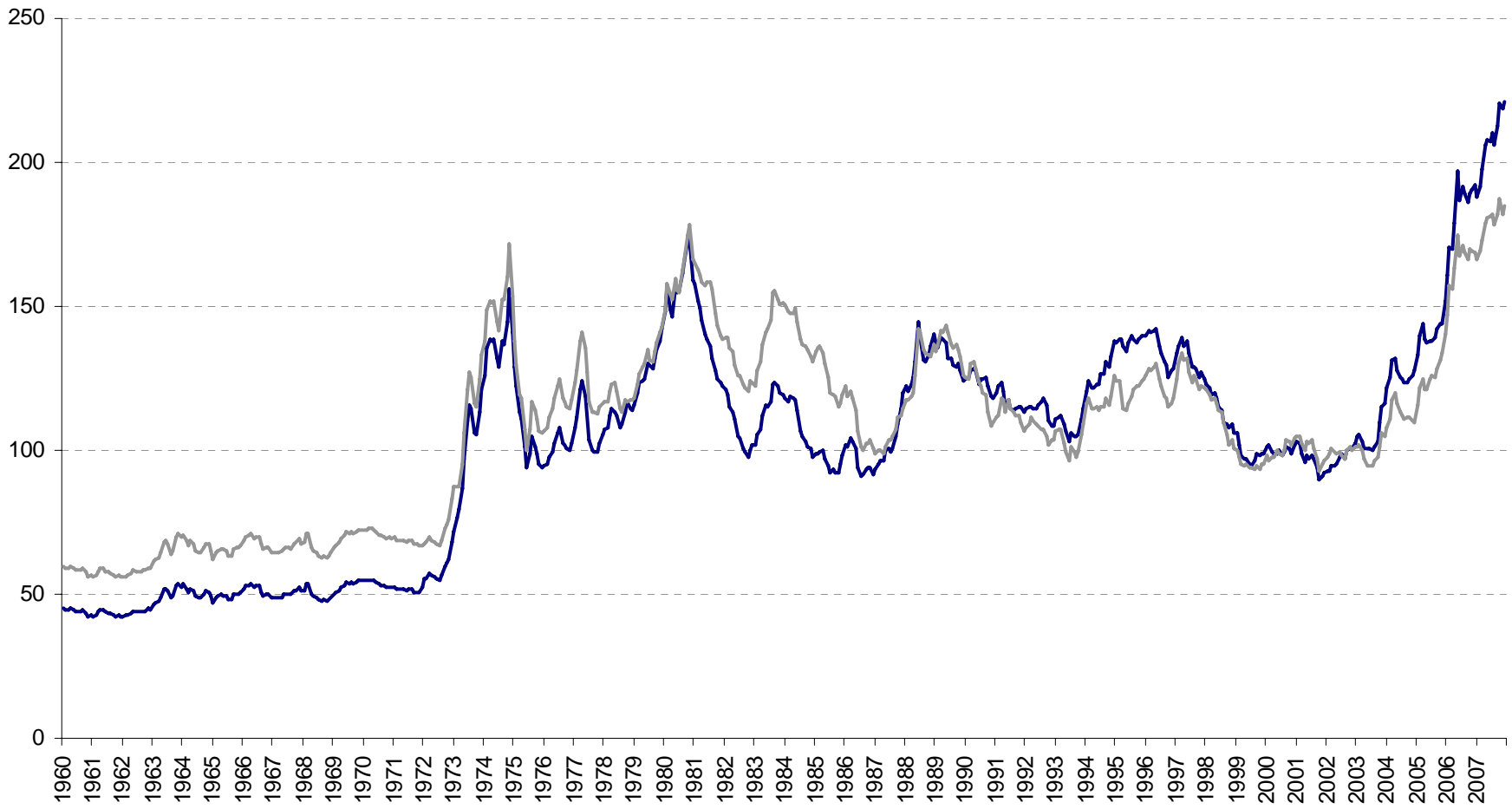


# **Evolution of Commodity Prices**

**January 1960 - December 2007**  
**Nominal Prices**  
*(Monthly Averages)*

**Commodities Branch**  
**January 2008**

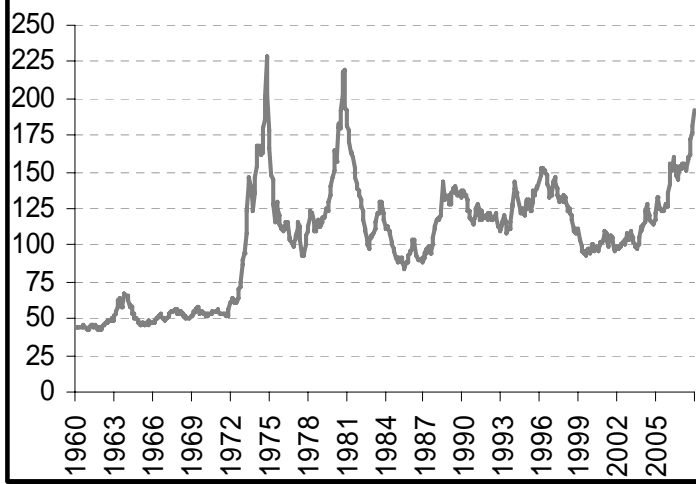
**Price Index - All groups**  
US\$ and SDR terms - Base = 2000



— Price Index - all groups (in terms of current dollars)

— Price Index - all groups (in terms of SDRs)

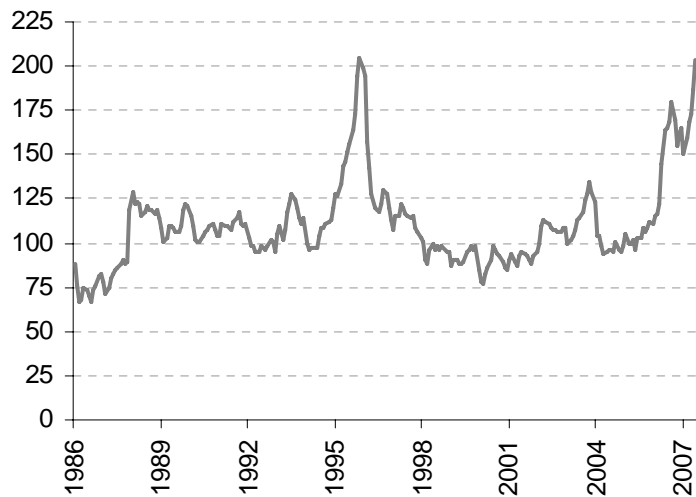
**Food Price Index**  
Base = 2000



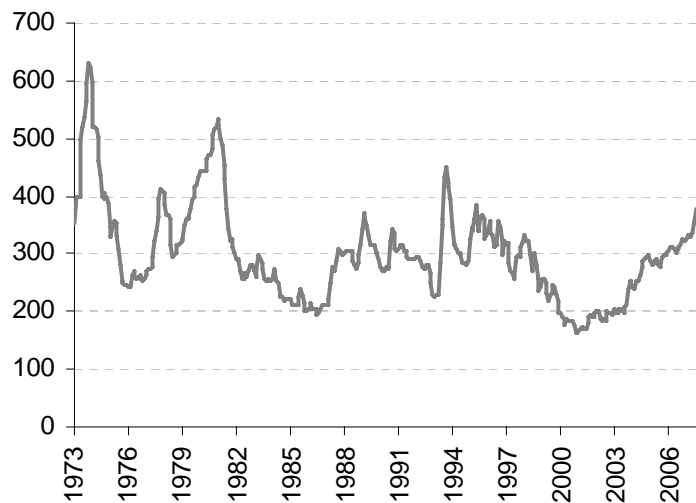
**Wheat, United States, n° 2 Hard Red Winter (ordinary), FOB Gulf (US\$/ton)**



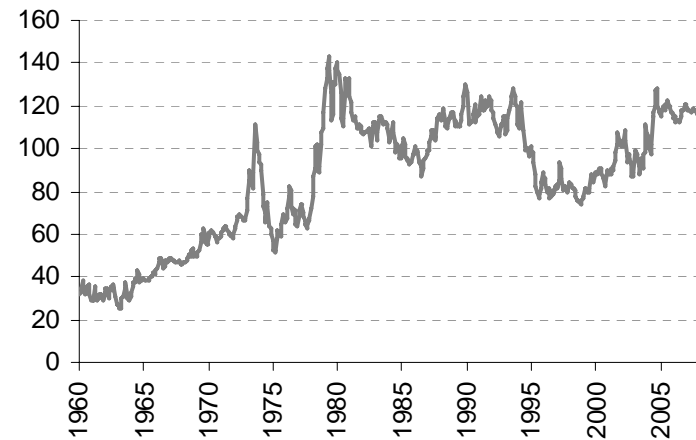
**Maize, United States, yellow n° 3, FOB Gulf (US\$/ton)**



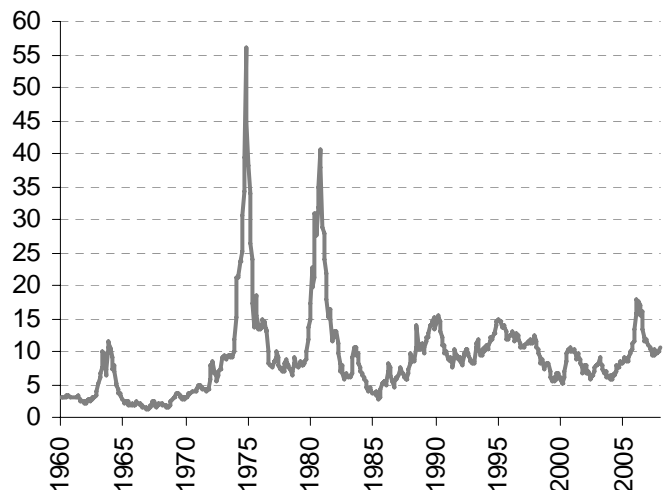
**Rice, Thailand, white milled, 5% broken, nominal price quotes, FOB Bangkok (US\$/ton)**



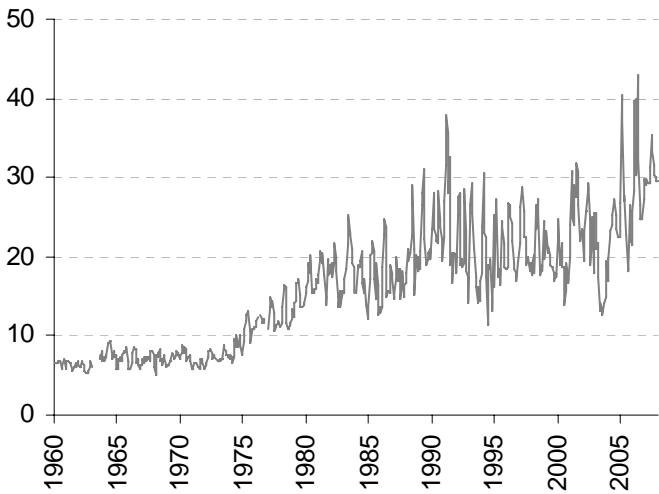
**Beef, Australia & New Zealand, frozen boneless, U.S. import price FOB port of entry (¢/lb.)**



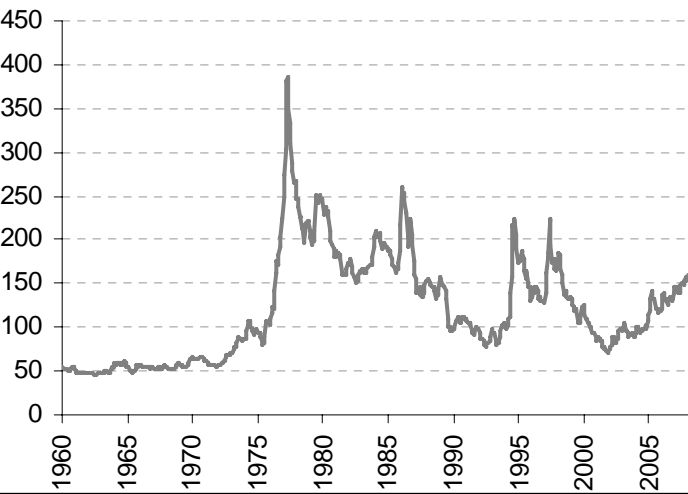
**Sugar, in bulk, average of I.S.A. daily prices, FOB Caribbean ports (¢/lb.)**



**Bananas, Central America and Ecuador,  
U.S. importer's price, FOB U.S. ports (¢/lb.)**

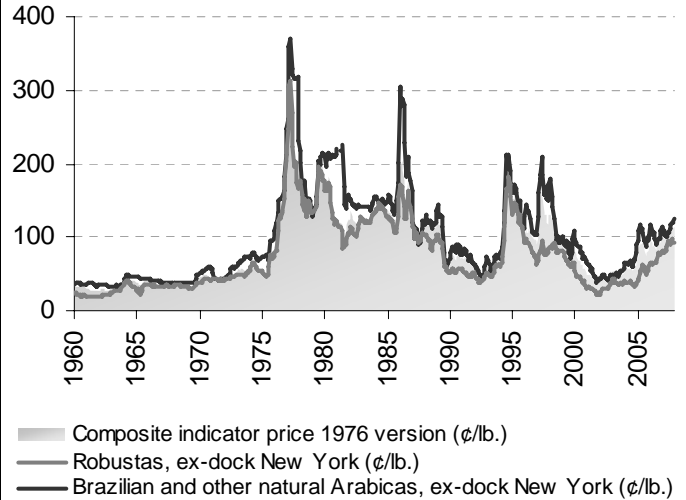


**Tropical Beverages Price Index  
Base = 2000**



**COFFEE PRICES**

Composite indicator, robustas, arabicas

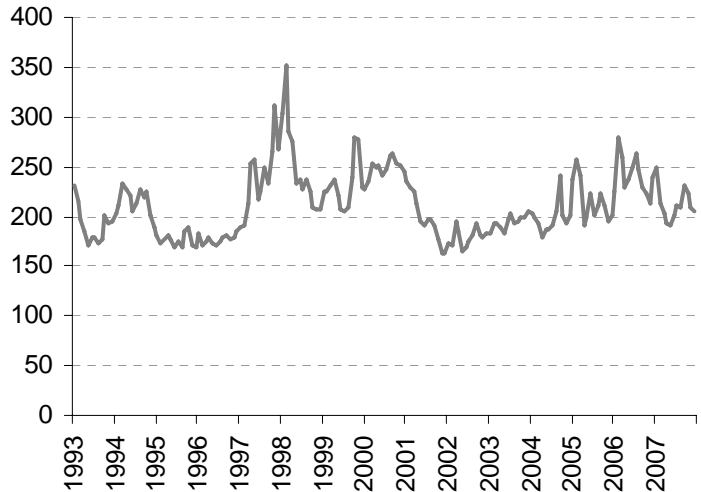


Composite indicator price 1976 version (¢/lb.)  
Robustas, ex-dock New York (¢/lb.)  
Brazilian and other natural Arabicas, ex-dock New York (¢/lb.)

**Cocoa beans, average daily prices New  
York/London (¢/lb.)**



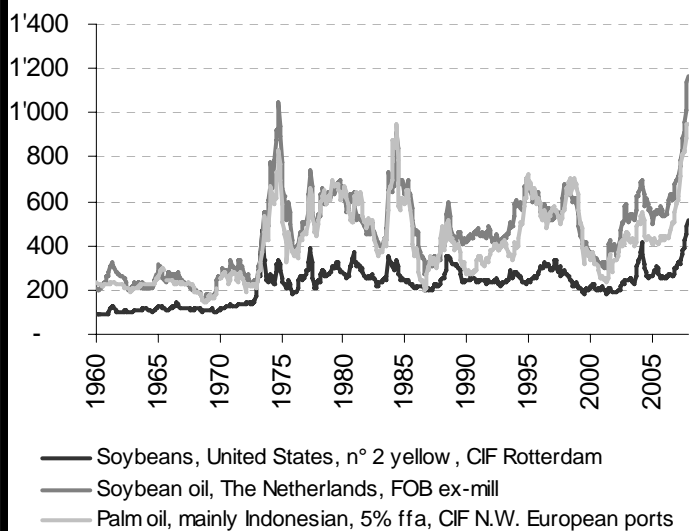
**Tea, Kenya, BPF 1, Mombasa auction prices  
(¢/kg)**



**Vegetable oilseeds and oils Price Index**  
Base = 2000



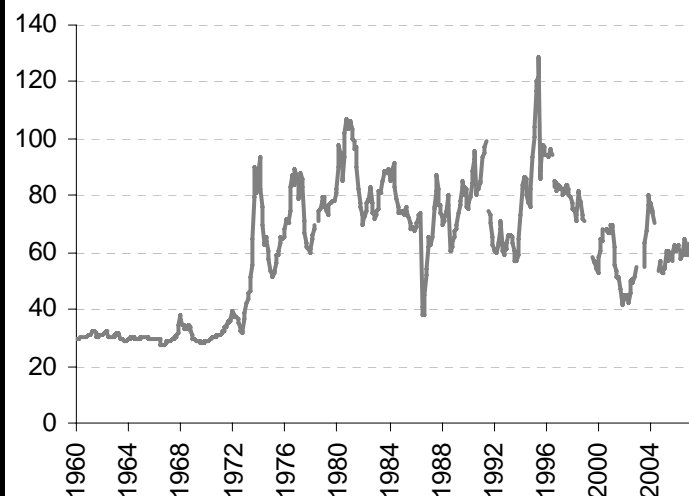
**Soybeans, Soybean oil, Palm oil (US\$/ton)**



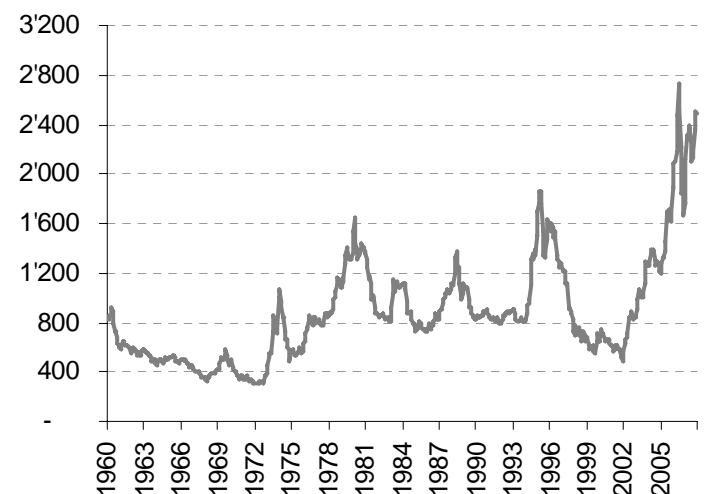
**Agricultural Raw Materials Price Index**  
Base = 2000



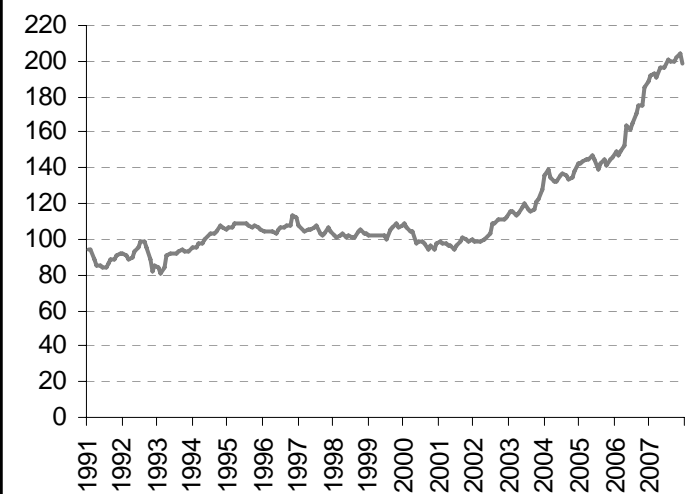
**Cotton, U.S. Memphis/Eastern, Midd.1-3/32",**  
**CIF North Europe quotations (¢/lb.)**



**Rubber in bales, n° 1 RSS, FOB Singapore**  
**(US\$/ton)**



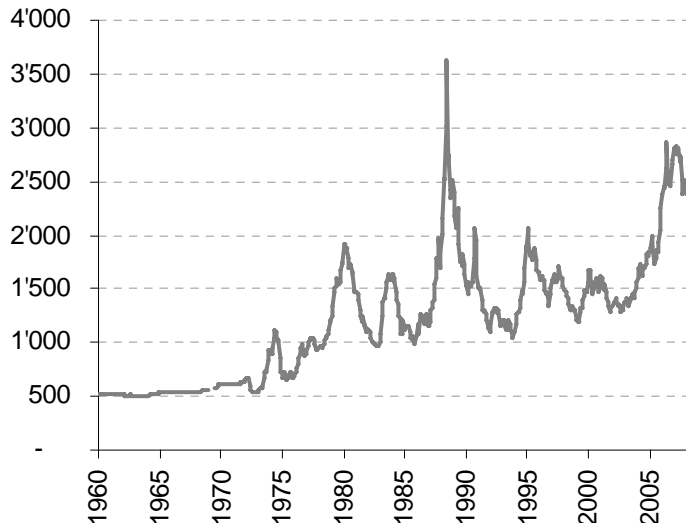
**Non-coniferous woods, U.K. import price**  
**index (\$ equivalent)**



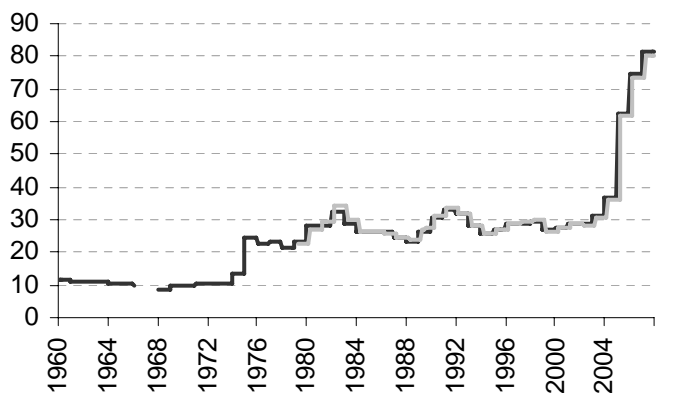
**Minerals, Ores and Metals Price Index**  
Base = 2000



**Aluminium high grade, LME, cash (US\$/Ton)**

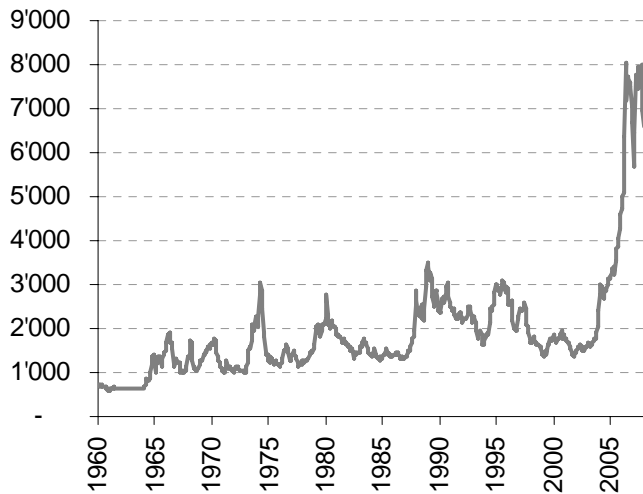


**Iron Ore Prices: Brazilian to Europe, Australian to Japan (Cents/Fe unit)**

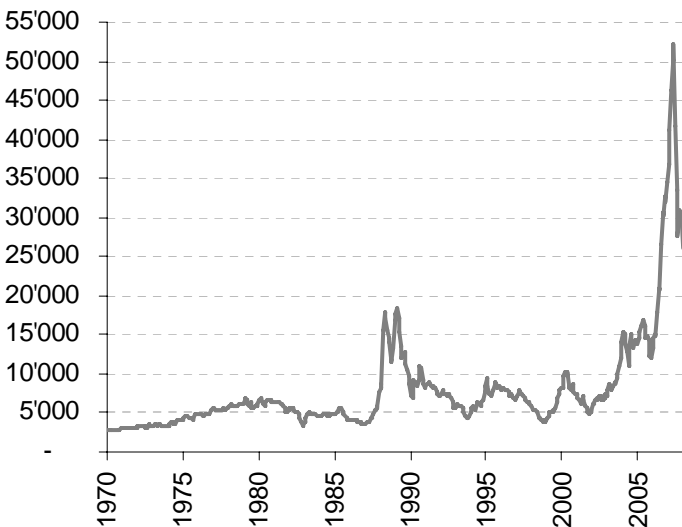


— Brazilian to Europe, CVRD, 64.5% Fe content, FOB (¢/Fe unit)  
 - - - Australian to Japan, Hamersley, 64% Fe content, FOB (¢/Fe unit)

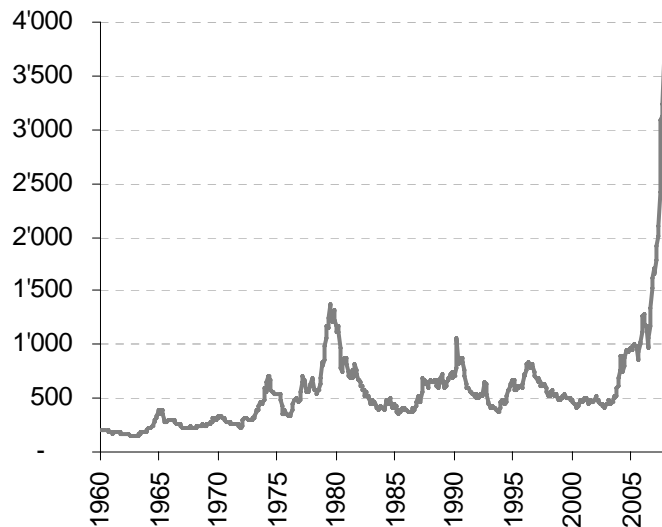
**Copper, grade A, electrolytic wire bars/cathodes, LME, cash (US\$/Ton)**



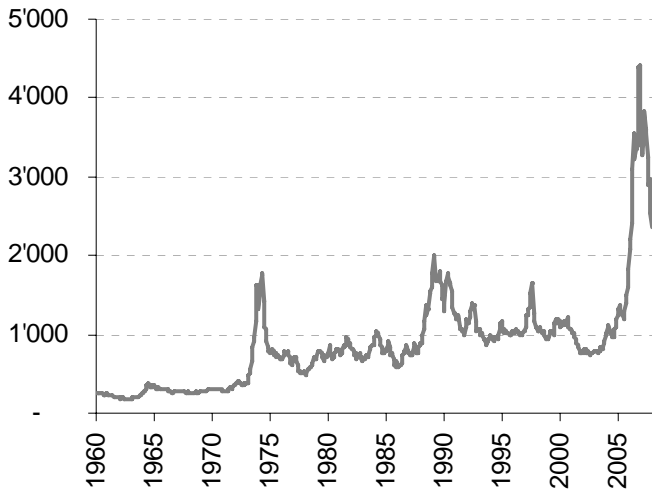
**Nickel, LME, cash (US\$/Ton)**



**Lead, LME, cash settlement (US\$/Ton)**



**Zinc, special high grade, LME, cash settlement (US\$/Ton)**



**Tin, LME, cash (US\$/Ton)**



**Gold, 99.5% fine, afternoon fixing London (\$/troy ounce)**



**Crude petroleum, average of Dubai / Brent / Texas equally weighted (\$/barrel)**

